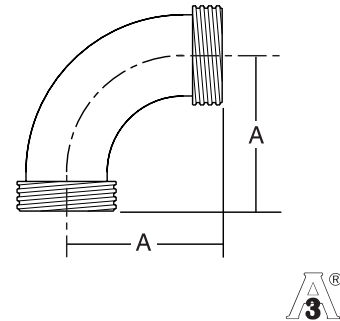


Bevel Seat Elbows

2C - 90° Sweep Elbow

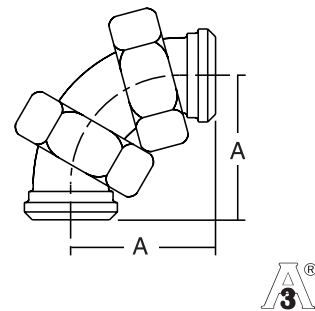
Size		A	
in	mm	in	mm
1	25.4	2	50.8
1½	38.1	2⅞	73.0
2	50.8	3 ²³ / ₃₂	94.5
2½	63.5	4 ²⁷ / ₃₂	123.0
3	76.2	5 ²⁹ / ₃₂	150.0
4	101.6	8 ¹ / ₁₆	204.8



Material Option: 304 (Finish Number 7)

2E - 90° Sweep Elbow

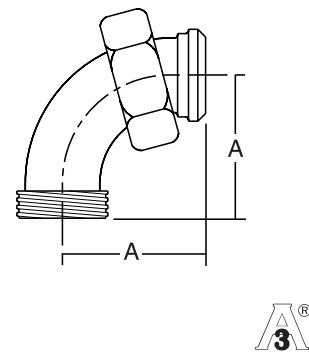
Size		A	
in	mm	in	mm
1	25.4	2	50.8
1½	38.1	2⅞	73.0
2	50.8	3 ²³ / ₃₂	94.5
2½	63.5	4 ²⁷ / ₃₂	123.0
3	76.2	5 ²⁹ / ₃₂	150.0
4	101.6	8 ¹ / ₁₆	204.8



Material Option: 304 (Finish Number 7)

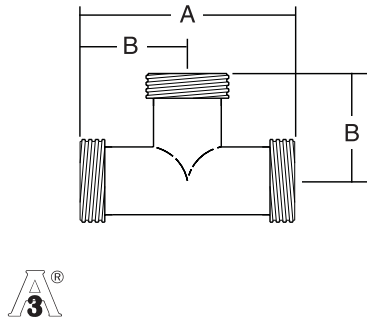
2F - 90° Sweep Elbow

Size		A	
in	mm	in	mm
1	25.4	2	50.8
1½	38.1	2⅞	73.0
2	50.8	3 ²³ / ₃₂	94.5
2½	63.5	4 ²⁷ / ₃₂	123.0
3	76.2	5 ²⁹ / ₃₂	150.0
4	101.6	8 ¹ / ₁₆	204.8



Material Option: 304 (Finish Number 7)

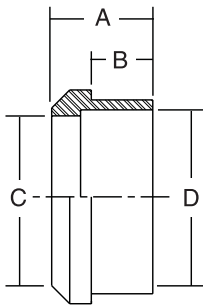
Bevel Seat Tees & Ferrules



7 - Tee

Size		A		B	
in	mm	in	mm	in	mm
1	25.4	3 ⁵ / ₈	92.1	1 ¹³ / ₁₆	46
1½	38.1	4 ³ / ₄	120.7	2 ³ / ₈	60.3
2	50.8	5 ⁹ / ₁₆	141.3	2 ²⁵ / ₃₂	70.6
2½	63.5	6 ³ / ₈	161.9	3 ³ / ₁₆	81.0
3	76.2	7	177.8	3½	88.9
4	101.6	9 ⁵ / ₁₆	236.5	4 ²¹ / ₃₂	118.3

Material Option: 304 (Finish Number 7)



14 - Plain Recessed Ferrule

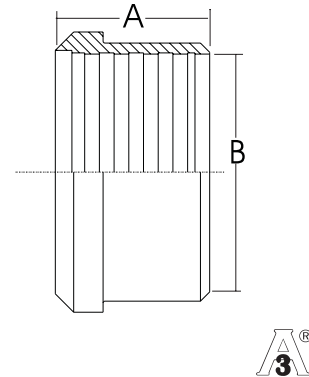
Size		A		B		C		D	
in	mm	in	mm	in	mm	in	mm	in	mm
1	25.4	¾	19.0	½	12.7	⅞	22.2	1	25.4
1½	38.1	⅞	22.2	⅝	15.9	1⅞	34.9	1½	38.1
2	50.8	31/32	24.6	11/16	17.5	1⅞	47.6	2	50.8
2½	63.5	1¼	27.0	¾	19.0	2⅞	60.3	2½	63.5
3	76.2	1⅞	28.6	13/16	20.6	2⅞	73.0	3	76.2
4	101.6	1¾	31.8	15/16	23.8	353/64	97.2	4	101.6

Material Option: 304 (Finish Number 7)

Bevel Seat Ferrules

14R - Plain Recessless Ferrule (Expanding Type)

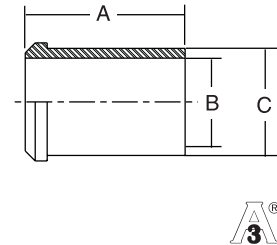
Size		A		B	
in	mm	in	mm	in	mm
1	25.4	$\frac{3}{4}$	19.0	1	25.4
1½	38.1	$1\frac{1}{8}$	28.6	1½	38.1
2	50.8	$1\frac{5}{16}$	33.3	2	50.8
2½	63.5	$1\frac{3}{8}$	34.9	2½	63.5
3	76.2	$1\frac{7}{16}$	36.5	3	76.2
4	101.6	$1\frac{1}{2}$	38.1	4	101.6



Material Option: 304 (Finish Number 7)

14W - Plain Ferrule, Tank Spud (Heavy)

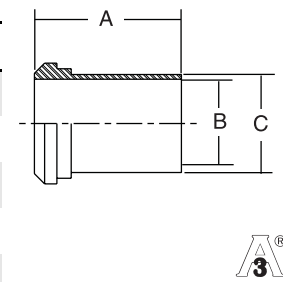
Size		A		B		C	
in	mm	in	mm	in	mm	in	mm
1	25.4	$2\frac{3}{8}$	60.3	$\frac{7}{8}$	22.2	$1\frac{5}{32}$	29.4
1½	38.1	$2\frac{17}{32}$	64.3	$1\frac{3}{8}$	34.9	$1\frac{43}{64}$	42.5
2	50.8	$2\frac{25}{32}$	70.6	$1\frac{7}{8}$	47.6	$2\frac{3}{16}$	55.6
2½	63.5	$3\frac{1}{16}$	77.8	$2\frac{3}{8}$	60.3	$2\frac{45}{64}$	68.6
3	76.2	$3\frac{17}{32}$	89.7	$2\frac{7}{8}$	73.0	$3\frac{7}{32}$	81.8
4	101.6	$4\frac{5}{16}$	109.5	$3\frac{53}{64}$	97.2	$4\frac{1}{4}$	108.0



Material Option: 304 (Finish Number 7)

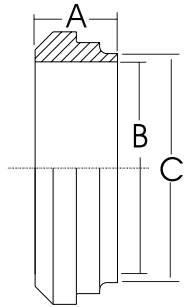
14WL - Plain Ferrule, Tank Spud (Light)

Size		A		B		C	
in	mm	in	mm	in	mm	in	mm
1	25.4	2	50.8	$\frac{7}{8}$	22.2	1	25.4
1½	38.1	$2\frac{1}{4}$	57.2	$1\frac{3}{8}$	34.9	1½	38.1
2	50.8	$2\frac{1}{2}$	63.5	$1\frac{7}{8}$	47.6	2	50.8
2½	63.5	$2\frac{3}{4}$	69.9	$2\frac{3}{8}$	60.3	2½	63.5
3	76.2	3	76.2	$2\frac{7}{8}$	73.0	3	76.2
4	101.6	4	101.6	$3\frac{53}{64}$	97.2	4	101.6



Material Option: 304 (Finish Number 7)

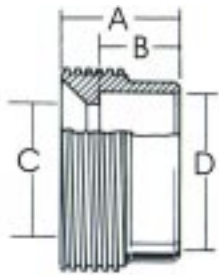
Bevel Seat Ferrules



14PRFS - Short Welding Ferrule

Size		A		B		C	
in	mm	in	mm			in	mm
1	25.4	$\frac{11}{16}$	17.5	$\frac{7}{8}$	22.2	1	25.4
1½	38.1	$\frac{23}{32}$	18.3	$1\frac{11}{32}$	34.1	1½	38.1
2	50.8	$\frac{23}{32}$	18.3	$1\frac{7}{8}$	47.6	2	50.8
2½	63.5	$\frac{27}{32}$	21.4	$2\frac{11}{32}$	59.5	2½	63.5
3	76.2	$\frac{29}{32}$	23.0	$2\frac{7}{8}$	73.0	3	76.2
4	101.6	$1\frac{7}{32}$	31.0	$3\frac{13}{16}$	81.0	4	101.6

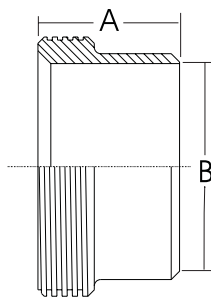
Material Option: 304 (Finish Number 7)



15 - Threaded Recessed Ferrule

Size		A		B		C		D	
in	mm	in	mm	in	mm	in	mm	in	mm
1	25.4	$\frac{13}{16}$	20.6	$\frac{1}{2}$	12.7	$\frac{7}{8}$	22.2	1	25.4
1½	38.1	$\frac{7}{8}$	22.2	$\frac{5}{8}$	15.9	$1\frac{3}{8}$	34.9	1½	38.1
2	50.8	$1\frac{1}{32}$	26.2	$1\frac{11}{16}$	17.5	$1\frac{7}{8}$	47.6	2	50.8
2½	63.5	$1\frac{1}{8}$	28.6	$\frac{3}{4}$	19.0	$2\frac{3}{8}$	60.3	2½	63.5
3	76.2	$1\frac{1}{4}$	31.8	$\frac{13}{16}$	20.6	$2\frac{7}{8}$	73.0	3	76.2
4	101.6	$1\frac{3}{8}$	34.9	$\frac{15}{16}$	23.8	$3\frac{59}{64}$	97.2	4	101.6

Material Option: 304 (Finish Number 7)



15R - Threaded Recessless Ferrule (Expanding Type)

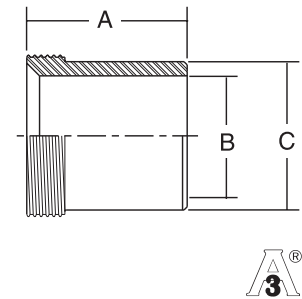
Size		A		B	
in	mm	in	mm	in	mm
1	25.4	$\frac{13}{16}$	20.6	1	25.4
1½	38.1	$1\frac{1}{8}$	28.6	1½	38.1
2	50.8	$1\frac{3}{8}$	34.9	2	50.8
2½	63.5	$1\frac{1}{2}$	38.1	2½	63.5
3	76.2	$1\frac{5}{8}$	41.3	3	76.2
4	101.6	$1\frac{5}{8}$	41.3	4	101.6

Material Option: 304 (Finish Number 7)

Bevel Seat Ferrules

15W - Threaded Ferrule, Tank Spud (Heavy)

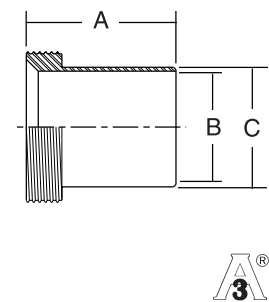
Size		A		B		C	
in	mm	in	mm	in	mm	in	mm
1	25.4	1½	38.1	⅞	22.2	¼	31.8
1½	38.1	1⅝	41.3	1⅜	34.9	¼	44.5
2	50.8	1¾	44.5	1⅞	47.6	2⅝ ₁₆	58.7
2½	63.5	1¾	44.5	2⅞	60.3	2⅞	73.0
3	76.2	1⅞ ₁₆	46.0	2⅞	73.0	3⅞	85.7
4	101.6	2⅞	54.0	3 ⁵³ / ₆₄	97.2	4¼	108.0



Material Option: 304 (Finish Number 7)

15WL - Threaded Ferrule, Tank Spud (Light)

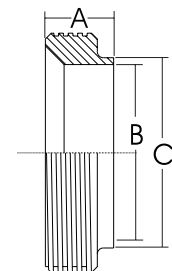
Size		A		B		C	
in	mm	in	mm	in	mm	in	mm
1	25.4	2	50.8	⅞	22.2	1	25.4
1½	38.1	2¼	57.2	1⅜	34.9	1½	38.1
2	50.8	2½	63.5	1⅞	47.6	2	50.8
2½	63.5	2¾	69.9	2⅞	60.3	2½	63.5
3	76.2	3	76.2	2⅞	73.0	3	76.2
4	101.6	4	101.6	3 ⁵³ / ₆₄	97.2	4	101.6



Material Option: 304 (Finish Number 7)

15TRFS - Short Welding Ferrule

Size		A		B		C	
in	mm	in	mm	in	mm	in	mm
1	25.4	1 ¹¹ / ₁₆	17.5	2 ⁷ / ₃₂	21.4	1	25.4
1½	38.1	2 ³ / ₃₂	18.3	1 ¹¹ / ₃₂	34.1	1½	38.1
2	50.8	2 ³ / ₃₂	18.3	1 ²⁷ / ₃₂	46.8	2	50.8
2½	63.5	2 ⁷ / ₃₂	21.4	2 ¹¹ / ₃₂	59.5	2½	63.5
3	76.2	2 ⁹ / ₃₂	23.0	2 ²⁷ / ₃₂	72.2	3	76.2
4	101.6	1 ⁷ / ₃₂	31.0	3 ¹³ / ₁₆	96.8	4	101.6

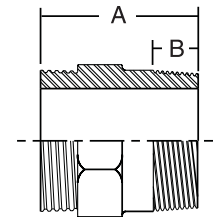


Material Option: 304 (Finish Number 7)

Bevel Seat Adapters

21 - Adapters (Non 3A)

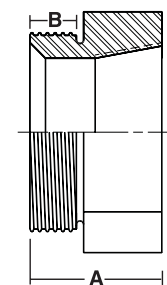
Size		A		B	
in	mm	in	mm	in	mm
1 x 1	25.4 x 25.4	2 ¹ / ₄	57.2	2 ¹ / ₃₂	16.7
1½ x 1½	38.1 x 38.1	2 ⁷ / ₁₆	61.9	2 ³ / ₃₂	18.3
2 x 2	50.8 x 50.8	2 ²¹ / ₃₂	67.5	¾	19.0
2½ x 2½	63.5 x 63.5	3 ⁹ / ₃₂	83.3	1 ⁹ / ₆₄	29.0
3 x 3	76.2 x 76.2	3½	88.9	1 ¹³ / ₆₄	27.6
4 x 4	101.6 x 101.6	3 ¹³ / ₁₆	96.8	1 ⁵ / ₁₆	33.3



Material Option: 304 (Finish Number 7)

22 - Adapters (Non 3A)

Size		A		B	
in	mm	in	mm	in	mm
1 x 1	25.4 x 25.4	2 ¹ / ₁₆	52.4	9 ¹ / ₁₆	14.3
1½ x 1½	38.1 x 38.1	2¼	57.2	3 ⁵ / ₆₄	13.9
2 x 2	50.8 x 50.8	2 ¹¹ / ₃₂	59.5	3 ⁵ / ₆₄	13.9
2½ x 2½	63.5 x 63.5	2 ³ / ₃₂	53.2	4 ³ / ₆₄	17.1
3 x 3	76.2 x 76.2	2 ³ / ₁₆	55.6	¾	19.0
4 x 4	101.6 x 101.6	2 ⁵ / ₈	66.7	7 ⁷ / ₈	22.2



Material Option: 304 (Finish Number 7)

16A - Plain Cap

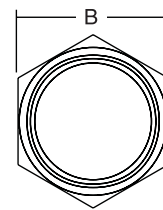
Size		A	
in	mm	in	mm
1	25.4	1 ⁵ / ₁₆	33.3
1½	38.1	1 ²⁷ / ₃₂	46.8
2	50.8	2 ³ / ₈	60.3
2½	63.5	2 ²⁹ / ₃₂	73.8
3	76.2	3 ⁷ / ₁₆	87.3
4	101.6	4½	114.3



Material Option: 304 (Finish Number 7)

13H - Hex Union Nut, Non 3A

Size		A		B	
in	mm	in	mm	in	mm
1	25.4	2 ⁹ / ₃₂	23.0	1 ¹³ / ₁₆	46.0
1½	38.1	3 ¹ / ₃₂	24.6	2 ¹³ / ₃₂	61.1
2	50.8	1 ¹ / ₁₆	27.0	3	76.2
2½	63.5	1 ³ / ₁₆	30.2	3 ¹⁹ / ₃₂	91.3
3	76.2	1 ⁹ / ₃₂	32.5	4 ³ / ₁₆	106.4
4	101.6	1½	38.1	5 ⁷ / ₁₆	138.1



Material Option: 304